

# CertainTeed

## Type C

### Gypsum Board

#### Product Data and Submittal

#### Product Description

CertainTeed Type C Gypsum Board is an interior gypsum board consisting of a solid set, fire-resistive, Type C gypsum core enclosed in ivory-colored face paper and a strong liner back paper. CertainTeed Type C board features a specially formulated Type X core providing superior fire performance when used in specific fire-rated Type C assemblies. Long edges are slightly tapered, allowing joints to be reinforced and concealed with joint tape and joint compound. CertainTeed Type C Gypsum Board is available in a variety of lengths and widths.

#### Basic Uses

CertainTeed Type C Gypsum Board is used for interior walls and ceilings in residential and commercial applications requiring extended fire ratings. It can be used for new construction or renovations over wood or steel framing. They are typically nailed or screwed to studs spaced 16" (400 mm) or 24" (610 mm) o.c., but can be applied by laminating or with the use of an adhesive.

#### Advantages

- UL / cUL / ULC fire rated assemblies up to four hours.
- Consistently high quality.

- Uniformly flat, attractive appearance; no shadows.
- High edge hardness.
- No wavy edges, warps, bows or deformities.
- Uniform high-strength cores eliminate crumbling, cracking.
- Edge tapers consistent to form perfect joints.
- Excellent thermal barrier and sound attenuation qualities.
- GREENGUARD Gold Certified

#### Limitations

- Exposure to continuous moisture or extreme temperatures should be avoided. Not recommended for continuous exposure to temperatures exceeding 125° F (52° C).
- Framing spacing should not exceed 24" (610 mm) o.c.
- Should be stored indoors and off ground surface.
- Boards should be stacked flat with care taken to prevent sagging or damage to edges, ends and surfaces.
- Storing board lengthwise leaning against the framing is not recommended.
- Boards should be carried, not dragged, to place of installation to prevent damaging finished edges.

- Cutting and scoring should be done from the face side.
- In cold weather or during joint finishing, temperatures within the enclosure should stay within the range of 50° to 95°F (10° to 35°C) and with sufficient ventilation to carry off excess moisture.
- CertainTeed Type C can be substituted in an equivalent thickness in any fire-resistance rated assembly specifying Type X.
- Where CertainTeed Type C is specified to attain a fire resistance rating, CertainTeed Type X of equivalent thickness cannot be substituted.

#### Product Data

**Thickness:** 1/2" (12.7 mm)  
5/8" (15.9 mm)

**Width:** 4' (1220 mm) standard

**Length:** 8' to 12' standard  
(2440 mm to 3660 mm)

**Weight (nominal):**  
1/2" (12.7 mm) – 1.9 psf (9.3 kg/m<sup>2</sup>)  
5/8" (15.9 mm) – 2.3 psf (11.2 kg/m<sup>2</sup>)

**Edge:** Tapered, paper bound – factory finished

**Packaging:** Two pieces per bundle, face-to-face and end-taped

Continued on back

Job Name

Contractor

Date

Products Specified:

Submittal Approvals  
(Stamps or Signatures)

## Technical Data

### Surface Burning Characteristics

CertainTeed Type C Gypsum Board has a Flame Spread rating of 15 and Smoke Developed rating of 0, in accordance with ASTM E84, (UL 723, NFPA 255, CAN/ULC-S102).

### Fire Resistance

Fire resistance tests are conducted in accordance with ASTM E119, (ANSI/UL 263, NFPA 251, CAN/ULC-S101) and no warranty is made other than conformance to the standard under which the assembly was tested. Minor discrepancies may exist in the values of ratings, attributable to changes in materials and standards, as well as differences between testing facilities. Assemblies are listed as “combustible” (wood framing) and “noncombustible” (concrete and/or steel construction).

For fire resistance rating, refer to the Gypsum Association Fire Resistance Design Manual and UL Fire Resistance Directory – Vol. 1 or ULC Fire Resistance List of Equipment and Materials.

UL / cUL / ULC Type Designation listed in Fire Resistance Directories - Type C.

CertainTeed Type C meets and exceeds the Type X requirements of ASTM C1396 and CAN/CSA-A82.27.

### Applicable Standards and References

- ASTM C1396
- ASTM C840
- CAN/CSA-A82.31
- Gypsum Association GA-216
- Gypsum Association GA-214
- ICC International Building Code (IBC)
- National Building Code of Canada (NBCC)
- Meets and exceeds Type X requirements

### Installation

#### Recommendations

Installation of CertainTeed Type C Gypsum Boards should be consistent with methods described in the standards and references noted. Cutting should be from the face side of the boards for best results.

#### Decoration

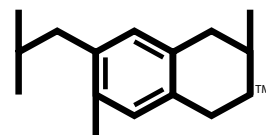
CertainTeed Type C Gypsum Board accepts most types of paints, texture and wall covering materials. The surface shall be primed and sealed with a full-bodied latex primer before applying a final decorative material. This will equalize the suction between the joint compounds and the paper surface.

For best painting results, all surfaces, including joint compound, should be clean, dust-free and not glossy. If glossy paints are used, a thin skim coat of compound over the entire surface, Level 5 finish, is recommended to reduce highlighting or joint photographing. This method is also recommended for areas of critical sidelighting of natural or artificial light sources.

A sealer application under wallpaper or other wall covering is also recommended so the board surface will not be damaged if the covering is subsequently removed during redecorating. Joint treatment must be thoroughly dry before proceeding with primer-sealer application and final decoration.

### Notice

The information in this document is subject to change without notice. CertainTeed assumes no responsibility for any errors that may inadvertently appear in this document.



Health Product  
DECLARATION

The Health Product Declaration™ and logo is owned by the Health Product Declaration Collaborative™ and is used with permission.



### ASK ABOUT ALL OF OUR OTHER CERTAINTEED® PRODUCTS AND SYSTEMS:

ROOFING • SIDING • TRIM • DECKING • RAILING • FENCE  
GYPSUM • CEILINGS • INSULATION

[www.certainteed.com](http://www.certainteed.com) <http://blog.certainteed.com>

CertainTeed Corporation  
20 Moores Road  
Malvern, PA 19355

Professional: 800-233-8990  
Consumer: 800-782-8777

© 1-2007 CertainTeed Gypsum, Inc. Rev 01-2016  
Printed in Canada on recycled paper. CTG-2319